

---

No.	F069-3438
ISSUED:	Feb. 15, 2011
REVISED:	Sep. 5, 2011

---

SERVICE INFORMATION

---



**HOSHIZAKI**  
**MODULAR CRESCENT CUBER**

**MODEL KMD-270AWA**  
**(50Hz)**

**PARTS LIST**  
**(GENERAL)**

A-1 FEB. 2011  
A-2 APR. 2011

## AUXILIARY CODE

U - 1

The auxiliary code is the first two characters in the serial number. The first character indicates the production year. Years progress or regress in alphabetical order. The series of letters and skipped letters depend on UL listing, production, and model. See the auxiliary code(s) and corresponding year(s) on the front cover.

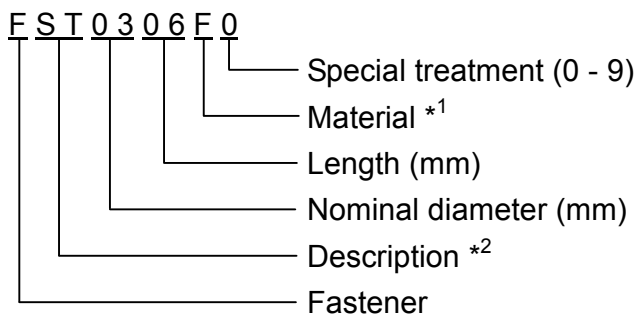
The second character indicates significant part changes within the same year. Base is "1" and this number advances for each change. If there is no significant part change at the turn of the year, this number starts from "0."

## MARKS LOCATED UNDER THE AUXILIARY CODE

- = Part deleted.
- x = Part deleted and replaced by "o" part.
- o = New part in place of "x" part.

## FASTENER PART NUMBER

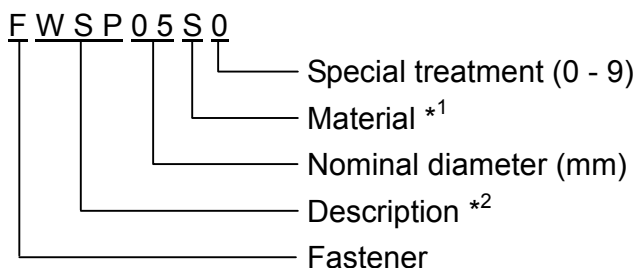
### SCREWS



\*<sup>1</sup> Material

- F: Steel
- S: Austenitic stainless steel
- M: Martensitic stainless steel
- B: Copper alloy
- P: Polycarbonate
- N: Polyamide
- V: PVC
- A: ABS
- X: Polyacetal
- L: Aluminum

### NUTS & WASHERS



\*<sup>2</sup> Description

- First letter
- S: Machine screw
- T: Tapping screw
- M: Wood screw
- B: Bolt
- W: Washer
- N: Nut



GENERAL

MODEL: <b>KMD-270AWA</b> TITLE: <b>A. ICE CUBER ASSY</b>							
INDEX NO.	DESCRIPTION	MATERIAL OR MODEL NUMBER	PART NUMBER	REQ'D NUMBER			
				A-1	A-2		
B	REFRIGERATION CIRCUIT		121297A01	1	1		
C	WATER CIRCUIT		120458A01	1	1		
D	CONTROL BOX ASSY		258743A01	1	1		
E	FRONT INSULATION ASSY		371887A02	1	1		
F	TOP INSULATION ASSY		374537A01	1	1		
G	BIN SWITCH		371886A01	1	1		
H	LABEL LOCATION		121202A01	1	1		
L	ACCESSORIES		A02171-01	1	1		
1	EVAP. CASE		120764G02	1	1		
2	T2 SCREW	4X8	FT20408F0	16	16		
3	BOTTOM FRAME		371876M01	1	1		
4	T2 SCREW	4X8 SUS	FT20408M0	4	4		
5	TOP FRAME		371867M01	1	1		
6	BUSHING	OCB-875	428394-04	3	3		
7	BUSHING	OCB-750	428394-01	1	1		
8	CLAMP	No.249	427902-03	3	3		
9	SIDE FRAME (A)		371873M01	1	1		
10	SIDE FRAME (B)		371866M01	1	1		
11	TOOTH WASHER	SUS 5	FWTB05S0	1	1		
12	TRUSS HEAD SCREW	SUS 5X8	FST0508S0	1	1		
13	TOOTH WASHER	SUS 4	FWTB04S0	1	1		
14	TRUSS HEAD SCREW	SUS 4X8	FST0408S0	1	1		
15	CONNECTOR		P00245-02	1	1		
16	CLAMP	NK-6N	418814-06	1	1		
17	CONT. BOX COVER		371874M01	1	1		
18	GASKET	L=563	121296Z01	2	2		
19	GASKET	L=203	121296Z02	1	1		
20	TOP PANEL		255967M01	1	1		
21	SIDE PANEL (R)		255966G02	1	1		

GENERAL

MODEL: <b>KMD-270AWA</b>		TITLE: <b>A. ICE CUBER ASSY</b>					
INDEX NO.	DESCRIPTION	MATERIAL OR MODEL NUMBER	PART NUMBER	REQ'D NUMBER			
				A-1	A-2		
22	FRONT PANEL		255965G01	1	1		
23	TRUSS HEAD SCREW	4X12 SUS	FST0412S0	2	2		
26	COLLAR		435269-01	4	4		
27	T2 SCREW	4X16 SUS	FT20416M0	4	4		
28	HOLE PLUG		373078R01	1	1		
29	GASKET	L=50	121296Z03	12	12		

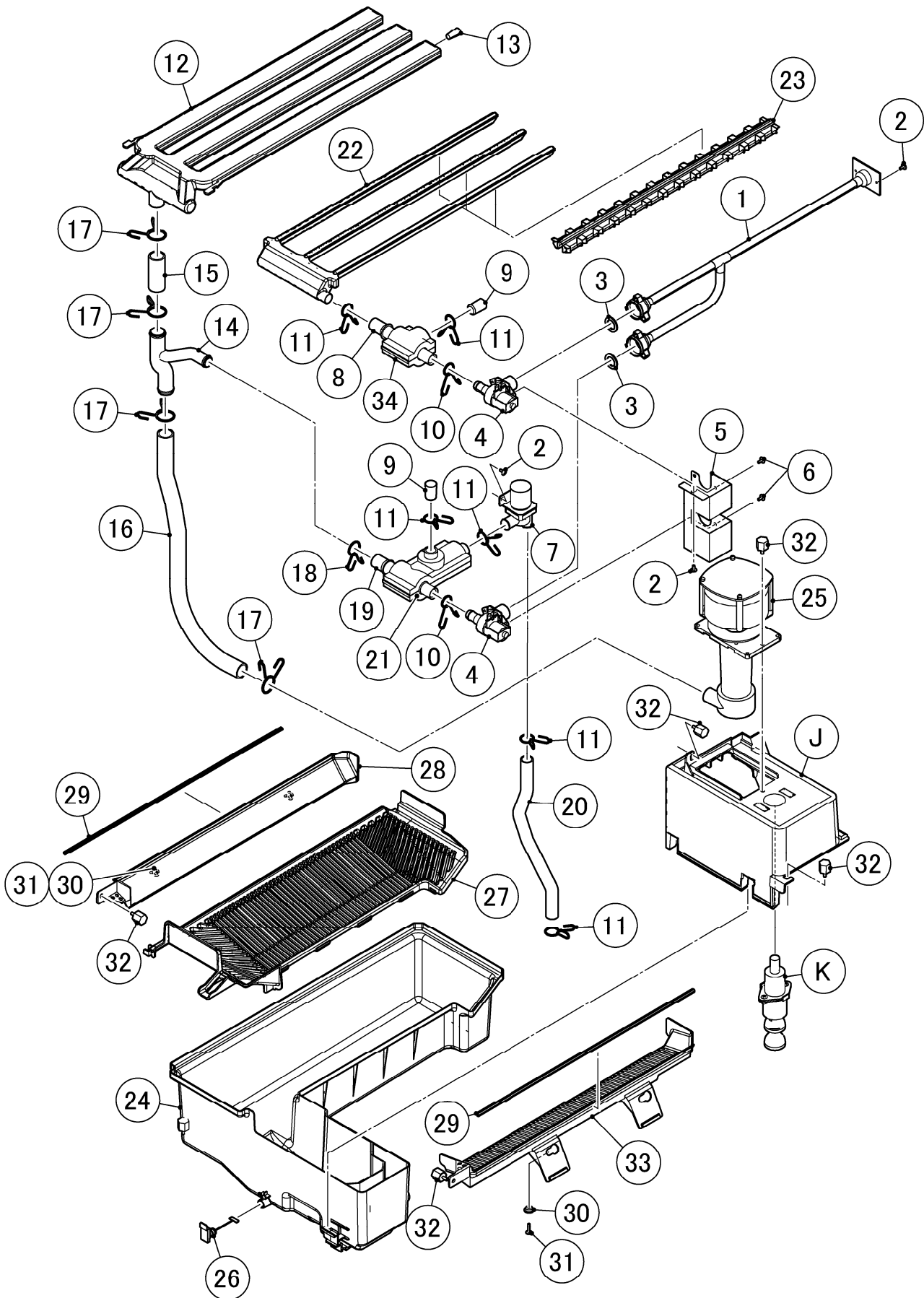


GENERAL

MODEL: <b>KMD-270AWA</b>				TITLE: <b>B. REFRIGERATION CIRCUIT</b>			
INDEX NO.	DESCRIPTION	MATERIAL OR MODEL NUMBER	PART NUMBER	REQ'D NUMBER			
				A-1	A-2		
1	CONDENSER - WATER COOLED		P01912-01	1	1		
2	HEX HEAD BOLT (SPRING WASHER AND FLAT WASHER)		FBK0510S0	6	6		
3	BASE - CONDENSER WATER COOLED		372520M01	1	1		
4	REAR PANEL		256723M01	1	1		
5	TRUSS HEAD TAPPING SCREW T2		FT20408F0	9	9		
6	COMPRESSOR		P01825-01	1	1		
7	COVER		459924-01	1	1		
8	CORD RELIEF		452239-01	1	1		
11	RUBBER GROMMET		450897-01	4	4		
13	BOLT		468180-01	4	4		
14	COMP. MOUNT		371868G01	1	1		
15	RIVET	SSD43SSBS(t3.2~4.8)	7170-0005	8	8		
16	COPPER TUBE (A) - HIGH SIDE		260233G01	1	1		
22	PRESSURE SWITCH		463180-05	1	1		
23	COPPER TUBE (B) - HIGH SIDE		372527G01	1	1		
25	COPPER TUBE (B) - CAPILLARY		446047-02	1	1		
26	DRIER		462965-01	1	-		
			P02070-01		1		
27	TIE		436156-02	1	1		
28	COPPER TUBE (D) - HIGH SIDE		374039G01	1	1		
30	STRAINER		P00812-01	1	1		
32	VALVE BODY		4A3978-01	1	1		
33	COIL - VALVE		P00810-01	1	1		
34	BOLT		P00811-01	1	1		
35	TRUSS HEAD MACHINE SCREW		FST0408S0	4	4		
36	ACCESS VALVE		457729-01	2	1		
37	COPPER TUBE (E) - HOT GAS		371883G03	1	1		
43	EXPANSION VALVE		4A1414-01	1	1		
44	EXPANSION VALVE COVER		3A0944-01	1	1		

GENERAL

MODEL: <b>KMD-270AWA</b>		TITLE: <b>B. REFRIGERATION CIRCUIT</b>					
INDEX NO.	DESCRIPTION	MATERIAL OR MODEL NUMBER	PART NUMBER	REQ'D NUMBER			
				A-1	A-2		
45	HEAT EXCHANGER		258736G02	1	1		
46	THERMISTOR		P00027-01	1	1		
47	HOLDER - THERMISTOR		427430-01	1	1		
48	HOLDER - EXP. VALVE 3/8		3A0107-01	1	1		
49	CLAMP		443461-02	1	1		
50	COPPER TUBE (F) - ACCESS VALVE		374038G01	1	1		
54	EVAPORATOR ASSY		258740G01	1	1		
74	ELBOW		417395-03	1	1		
55	TRUSS HEAD TAPPING SCREW T2		FT20408M0	6	6		
56	RUBBER INSULATION (B)		3A1045-01	1	1		
57	RUBBER INSULATION (A)		3A1044-01	1	1		
58	INSULATION HOLDER		473043M01	1	1		
59	INSULATION - THERMISTOR (A)		439368-01	1	1		
60	INSULATION - THERMISTOR (B)		439368-02	1	1		
51	INSULATION TUBE	7762-1020 L=90	H71020090	1	1		
62	NYLON TIE	CV-200	7920-0010	15	14		
63	WATER REGULATOR		P02095-01	1	1		
64	COPPER TUBE (A) - WATER CIRCUIT		372524G01	1	1		
68	COPPER TUBE (B) - WATER CIRCUIT		374888M01	1	1		
69	COPPER TUBE (C) - WATER CIRCUIT		372526G01	1	1		
72	NYLON TIE	CV-100	7920-0002	4	4		
73	INSULATION TUBE	7762-1020 L=245	H71020245	1	1		

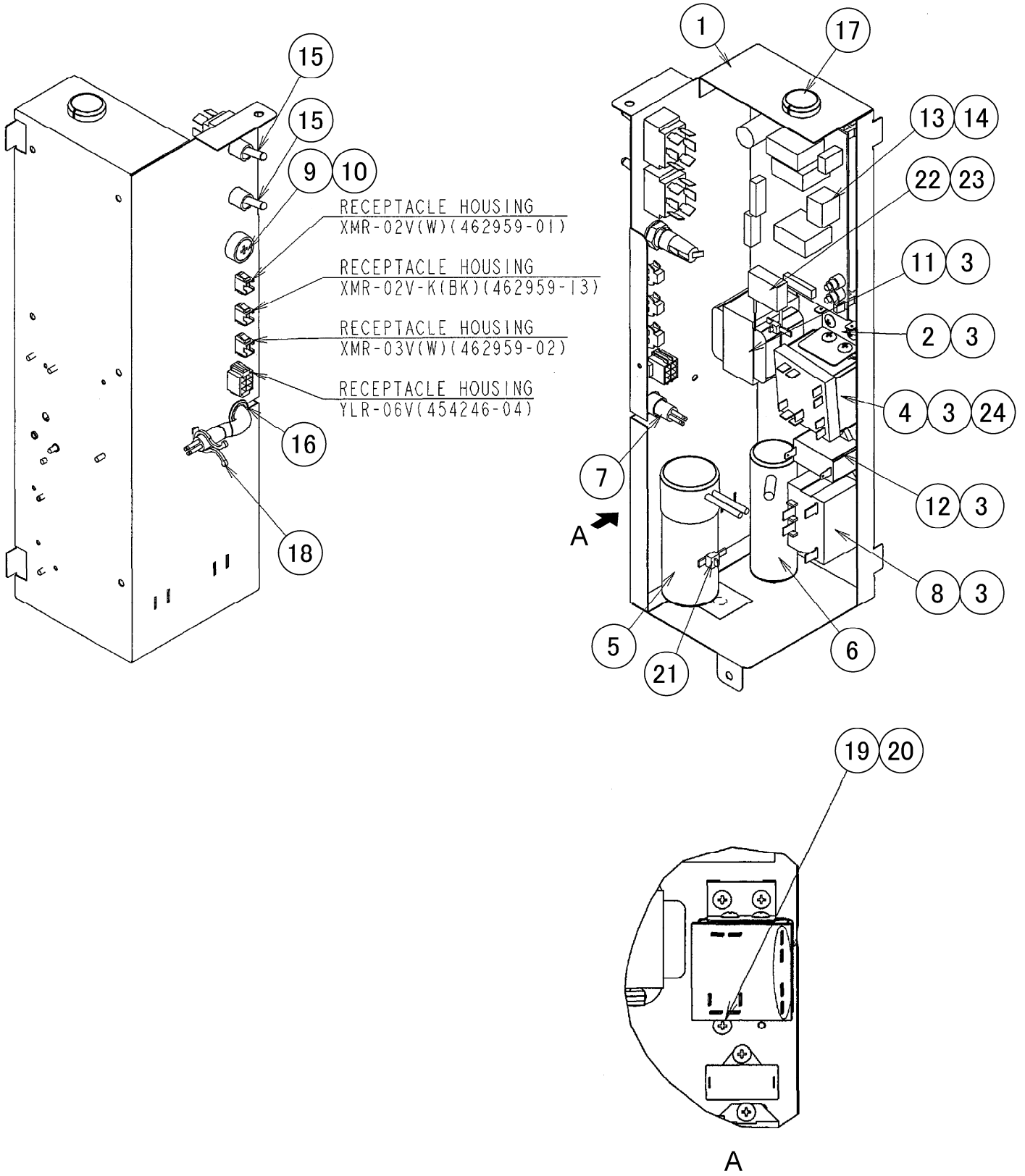


GENERAL

MODEL: <b>KMD-270AWA</b>		TITLE: <b>C. WATER CIRCUIT ASSY</b>					
INDEX NO.	DESCRIPTION	MATERIAL OR MODEL NUMBER	PART NUMBER	REQ'D NUMBER			
				A-1	A-2		
J	PUMP BRACKET ASSY		374040A01	1	1		
K	FLOAT SWITCH ASSY		373885A01	1	1		
1	WATER SUPPLY PIPE		371882G01	1	1		
2	T2 SCREW	4X8	FT20408F0	5	5		
3	RUBBER GASKET		413854-03	2	2		
4	WATER VALVE		P00805-01	2	2		
5	WATER VALVE BRACKET		371875G01	1	1		
6	TRUSS HEAD SCREW	4X8 SUS	FST0408S0	4	4		
7	SOLENOID VALVE	FDC-90-02-220	P00018-01	1	1		
8	TEE		371167R01	1	1		
9	PLUG		472567P01	2	2		
10	HOSE CLAMP	16.5mm SUS	427443-04	2	2		
11	HOSE CLAMP	18mm SUS	427443-05	6	6		
12	SPRAY TUBE		255256P01	1	1		
13	PLUG		4A0176-01	3	3		
14	CONNECTING PIPE		371162P01	1	1		
15	SILICONE HOSE	Φ20XΦ25(CLEAR) L=60	H12025060	1	1		
16	SILICONE HOSE	Φ20XΦ25(CLEAR) L=465	H12025465	1	1		
17	HOSE CLAMP	25mm SUS	427443-03	4	4		
18	HOSE CLAMP	20mm SUS	427443-06	1	1		
19	BYPASS HOSE		371165R01	1	1		
20	SILICONE HOSE	Φ15XΦ19(CLEAR) L=340	H11519340	1	1		
21	BYPASS INSULATION		371169Z01	1	1		
22	WATER SUPPLY TUBE		255255P01	1	1		
23	SPRAY GUIDE		258313P05	3	3		
24	WATER TANK		120463P01	1	1		
25	PUMP MOTOR		P00818-01	1	1		

GENERAL

MODEL: <b>KMD-270AWA</b>		TITLE: <b>C. WATER CIRCUIT ASSY</b>					
INDEX NO.	DESCRIPTION	MATERIAL OR MODEL NUMBER	PART NUMBER	REQ'D NUMBER			
				A-1	A-2		
26	DRAIN CAP		371168G01	1	1		
27	CUBE GUIDE		118904P01	1	1		
28	DEFLECTOR (L)		255250P01	1	1		
29	GASKET		371166R01	2	2		
30	COLLAR		435269-01	4	4		
31	T2 SCREW	4X16 SUS	FT20416M0	4	4		
32	THUMBSCREW		415949G12	5	5		
33	DEFLECTOR (R)		258596P01	1	1		
34	INLET INSULATION		373079Z01	1	1		



GENERAL

MODEL: <b>KMD-270AWA</b>		TITLE: <b>D. CONTROL BOX ASSY</b>					
INDEX NO.	DESCRIPTION	MATERIAL OR MODEL NUMBER	PART NUMBER	REQ'D NUMBER			
				A-1	A-2		
1	CONTROL BOX		255970M01	1	1		
2	BRACKET - STARTER		474966M01	1	1		
3	TRUSS HEAD TAPPING SCREW T2		FT20408F0	9	9		
4	STARTING RELAY		P01826-01	1	1		
5	START CAPACITOR		P01827-01	1	1		
6	RUN CAPACITOR		P01828-01	1	1		
7	WIRE KIT		P01829-01	1	1		
8	POWER RELAY		P00034-01	1	1		
9	FUSE HOLDER		P00014-01	1	1		
10	FUSE		P00015-01	1	1		
11	TRANSFORMER		P00012-01	1	1		
12	CAPACITOR		P00850-01	1	1		
13	CONTROLLER BOARD		P01771-02	1	1		
14	BOARD SUPPORT		P01770-01	4	4		
15	TOGGLE SWITCH		P01206-01	2	2		
16	BUSHING		428394-03	1	1		
17	BUSHING		420472-05	1	1		
18	CLAMP	No.249	427902-03	1	1		
19	TOOTH WASHER		FWTB04S0	1	1		
20	TRUSS HEAD MACHINE SCREW		FST0408S0	1	1		
21	NYLON TIE	CV-200	7920-0010	1	1		
22	CAPACITOR		P00228-01	1	1		
23	TIE	CV-150	7920-0003	1	1		
24	NYLON TIE	CV-100	7920-0002	2	2		

